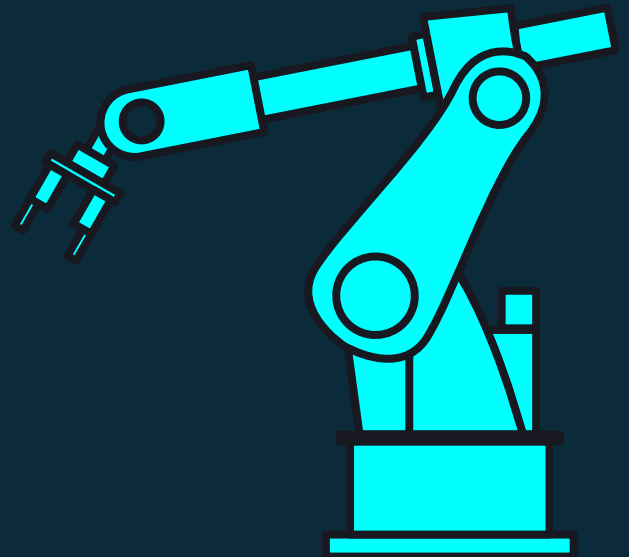



AI AND WHAT DO I KNOW ABOUT IT?

In recent years, it's quite evident how artificial intelligence is advancing rapidly. The progress in this field has been astonishing, with robots and AI systems performing tasks once exclusive to humans. For instance, a robot can now slowly do many of the tasks that a human can, from household chores to more complex activities like driving cars or analyzing data. I believe that robots will eventually replace people in many jobs, which could be beneficial for some sectors but detrimental for others.

The impact of robots taking over jobs depends heavily on the nature of the work. In hazardous or physically demanding jobs, such as mining or firefighting, replacing humans with robots could significantly reduce the risk of injury and save lives. Robots, devoid of feelings or fear, can operate under extreme conditions and work almost continuously without needing breaks. They do not incur the same costs as human workers, such as salaries and benefits, leading to increased efficiency and lower operational costs for businesses.





However, significant drawbacks exist. If robots replace humans in a wide range of jobs, it could lead to widespread unemployment and social disruption. Many people could find themselves out of work, struggling to find new employment opportunities. This is particularly concerning in professions that require a personal touch or human empathy, such as teaching. I can't imagine being taught by a robot instead of a teacher at school, as the interaction between students and teachers is crucial for effective learning and emotional development.

Electronics and AI are now everyday parts of our lives, and while I consider them beneficial, there is a growing concern that people often fail to recognize the limitations of these virtual tools. Phones, computers, and other devices are integral to modern life, but they exist within a virtual realm that can distract us from real-world experiences. The overreliance on virtual interactions can lead to a disconnection from reality and the essential human experiences that define our lives.

Moreover, the ethical implications of AI advancement cannot be overlooked. There is an ongoing debate about the moral responsibilities associated with creating intelligent machines. Questions about the potential for misuse of AI technologies and responsibility for AI-driven decisions are increasingly relevant. As AI continues to evolve, society must grapple with these issues to ensure technology serves the greater good.

In conclusion, I would like to point out that artificial intelligence has become so advanced that it is increasingly difficult to distinguish between content created by machines and that written by humans. This blurring of lines poses both opportunities and challenges, as we navigate a future where AI plays an ever-growing role in our daily lives and workplaces. It is crucial to balance the benefits of AI with the potential social and ethical implications, ensuring that technological progress enhances rather than diminishes the human experience.

